



The Clean House

By Sarah Ruhl



Idaho State
University



Idaho State
University

LEADERSHIP CENTER

**Elevate your organization
with custom trainings.**

ethics • leadership • strategy
employee retention • negotiations
marketing • branding

isu.edu/cob/leadership-center

leadershipcenter@isu.edu



Idaho State University

Presents

The Clean House

THE CLEAN HOUSE
by **Sarah Ruhl**

February 7, 8, 13-15, 2025 | 7:30 PM
Black Box Theatre | Stephens Performing Arts Center

CREATIVE TEAM

Director	Jef Petersen
Stage Manager	Sarah Senner*
Scenic Designer	Paul Yeates
Lighting Designer	Tristan Watson*
Assistant Lighting Designer	Brandon Moeness*
Costume Designer	Leoni Gambée*
Sound Designer	Kallis Shibahara*
Properties Designer	Elena Winward*
Technical Director/Production Manager	Chad Rodgers
Costume Shop Manager	Wendy Roberts
Portuguese Consultant	Maria Dias
Assistant Directors	Madysen Stewart*
	Jazz Grant*
	Erika Semenova*
Assistant Stage Managers	Mallory Howard*
	Asher Wardell

APO Member* or APO Pledge**

THE VIDEOTAPING OR MAKING OF ELECTRONIC OR OTHER AUDIO AND/OR VISUAL RECORDINGS OF THIS PRODUCTION AND DISTRIBUTING RECORDINGS OR STREAMS IN ANY MEDIUM, INCLUDING THE INTERNET, IS STRICTLY PROHIBITED, A VIOLATION OF THE AUTHOR(S)'S RIGHTS AND ACTIONABLE UNDER UNITED STATES COPYRIGHT LAW. FOR MORE INFORMATION, PLEASE VISIT: concordtheatricals.com/resources/protecting-artists

THE CLEAN HOUSE was originally produced by:
World Premiere produced by Yale Repertory Theatre, New Haven, Connecticut James Bundy,
Artistic Director; Victoria Nolan, Managing Director
Produced by Lincoln Center Theatre in 2006 New York City
First Act Commissioned by McCarter Theatre
"The Clean House" is presented by arrangement with Concord Theatricals
on behalf of Samuel French, Inc. www.concordtheatricals.com

ABOUT THE DIRECTOR

Jef Petersen *Director*

Jef Petersen is a director, playwright, actor, and celebrating the start of his second year as faculty at Idaho State University. He has been directing for the past thirteen years in which time he's received multiple honors from the Kennedy



Center American College Theatre Festival (KCACTF). Some of his favorite shows he's directed are *The Three Musketeers* and *The Wizard of Oz* (both at ISU), and *I Love You, You're Perfect, Now Change* and *The Tragical History of Dr. Faustus* (both at Lewis-Clark State College). He is a graduate of the College of Idaho (BA), the University of Oregon (MA), and the University of Idaho (MFA). His recent play, *Emme and the Taking of the Woods*, received the National KCACTF David Mark Cohen Award in 2022. Jef is thrilled to be part of the incredible theatre department in the School of Performing Arts at ISU. He would like to thank his amazing family for their support in this ongoing adventure in the amazing Pocatello, Idaho. Jef is originally from Greenleaf, Idaho.



Idaho State University

PASSION AND PRECISION

READ. WRITE. EXPLORE WHAT MATTERS.

English

Creative Writing
Literature
Professional Writing
Film Studies
Linguistics

Philosophy

Ethics
Biomedical Ethics
Philosophy
Philosophy—Pre-Law
Philosophy and Religion

DIRECTOR'S NOTE

The story goes that Sarah Ruhl, the playwright of *The Clean House*, was at a party when she overheard a doctor talking about her Brazilian maid being depressed and not wanting to clean, so the doctor medicated her, and thus was planted the seed that grew into the play that you are about to see. The story about the doctor and the maid is a rather bleak comment on class tensions in today's world. And while this anecdote about a doctor and her maid is present in the play, Sarah Ruhl creates a play that subverts the position of the doctor and elevates the standing of the maid.

I have been thinking about this play for over ten years, as I wrote about Sarah Ruhl (and this play) in my master's thesis while at the University of Oregon. I have wanted to direct it for as long.

The Clean House is a very challenging piece for actors because Ruhl's writing demands that those playing the characters must juggle a multitude of often contradictory experiences with them through each scene. Ruhl writes intentionally to make us dislike the characters we should like and adore the characters we might normally despise. And all this is done to create an experience that we didn't expect. This might seem confusing, but I don't want to give anything away, so hopefully, after the play is over, you can think back to reading this and say, "Oh yeah, I see what he was talking about now." *The Clean House* is a darkly subtle comedy about holding on to joy and humor, even during the dark times. And, maybe the more important theme of this play is women loving and taking care of women.

This small but unbelievably talented cast and crew have made this brief rehearsal period one of the best experiences ever. There has been so much laughter, joy, grief, experimentation, and strength throughout this entire process. I could not have asked for a better project to start out 2025 here at ISU.

I want to give the most sincerest of "thank yous" to the faculty, staff, Portuguese interpreters/consultants, stage management, costume designers, scenic designers, sound designers, lighting designers, technical director, costume shop manager, choreographer, builders, crew, publicity, and all of the many other hands involved in the production of this play. And thank you to my family for their love and support throughout this production. Whatever we make is always better when we all work together.

A good joke cleans us out, so have a good laugh and get a good cleaning. Live your dreams and care for one another.



ON THE STAGE!

CAST OF CHARACTERS

MATILDE	Mireya Soto*
LANE	Xendria Childs Hutchings*
VIRGINIA	Taylor Griffiths*
ANA	Kathleen Bills*
CHARLES	Hunter Angus**

APO Member* or APO Pledge**

PRODUCTION

RUN TIME & SETTING

Run Time	2 hours with a 10-minute intermission
Setting	A Metaphysical Connecticut
Warning	Language, Adultery



What are the next steps in your ISU education journey?



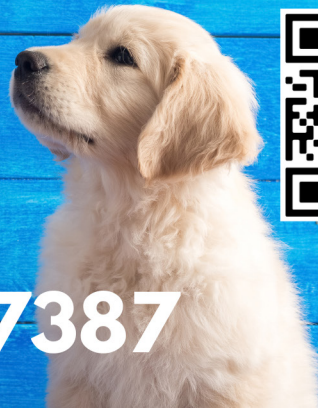
GO! for
GRAD SCHOOL

Learn More



isu.edu/graduate/

**Puppy
Preschool
Now Open!**



208-237-7387

PRODUCTION TEAM

RESIDENT STAFF

Theatre & Dance Dept. Chair/School of Performing Arts Co-Director	Tara Young
Music Dept. Chair/School of Performing Arts Co-Director	Shandra Helman
Promotions Director/Business Manager, School of Performing Arts	Meg Holmes
Theatre & Dance Dept. Administrative Assistant	Dottie Ashby
Business and Promotions Interns	Victoria Thomas*
	Hannah Jensen*
Graphic Designer	Kaylee McKay**
Costume Shop Manager	Wendy Roberts
Photographer	Travis Williams

ISU Student* or ISU Alumni**

FRONT OF HOUSE

Box Office Manager	Julie McKnight
Box Office Staff	Amber Stiffler
	Isabelle Eppich
	Megan Evans
	Bobette Wilson
	Holly Wilson
	Kerri Fisk
	Kristi Fisk
House Manager	Hannah Jensen
Ushers	Victoria Thomas
	Ryan Bills
	Chandler Fehr
	Brooklyn Bellis
	Rylie Wright
	Madison Kerr
	CJ Cluff
	Brandon Moeness
	Danielle Marie Huerta



No hidden costs, just great healthcare


HealthWest[™]

Primary Care • Dental Care • Pharmacy • Behavioral Health

www.HealthWestInc.org

PRODUCTION TEAM

RUN CREW

Lightboard Operator	Rylie Price**
Sound Designer	Sadie Adegbero**
Soundboard Operator	Sadie Adegbero**
Dressers	Cambry Henline**
	Payton Carter**
	Hope Bradford**
Deck Crew	Mallory Howard*
	Asher Wardell
Spotlight Operator	Shelby Summers

APO Member* APO Pledge**

CREATIVE TEAM CONTINUED

Costume Technicians	Leoni Gambee*
	Taylor Griffiths*
	Mireya Soto*
	Asher Wardell
	Kellie Weaver
	Elena Winward*
	THEA 2221 Laboratory Students
Master Electrician	Kallis Shibahara*
Assistant Master Electrician	Jacobi Molina*
Electricians	Kallis Shibahara*
	Jacobi Molina*
	Julian Seabury*
	Tristan Watson*
Scenic Charge Artist	Xendria Childs-Hutchings*
Scenic Carpenters	Xendria Childs-Hutchings*
	Cayden Logan*
	Rylie Price**
	Brandon Moeness*
	Asher Wardell

APO Member* APO Pledge**

For the best in embroidered
and screen printed apparel

OldTownEmbroidery.com

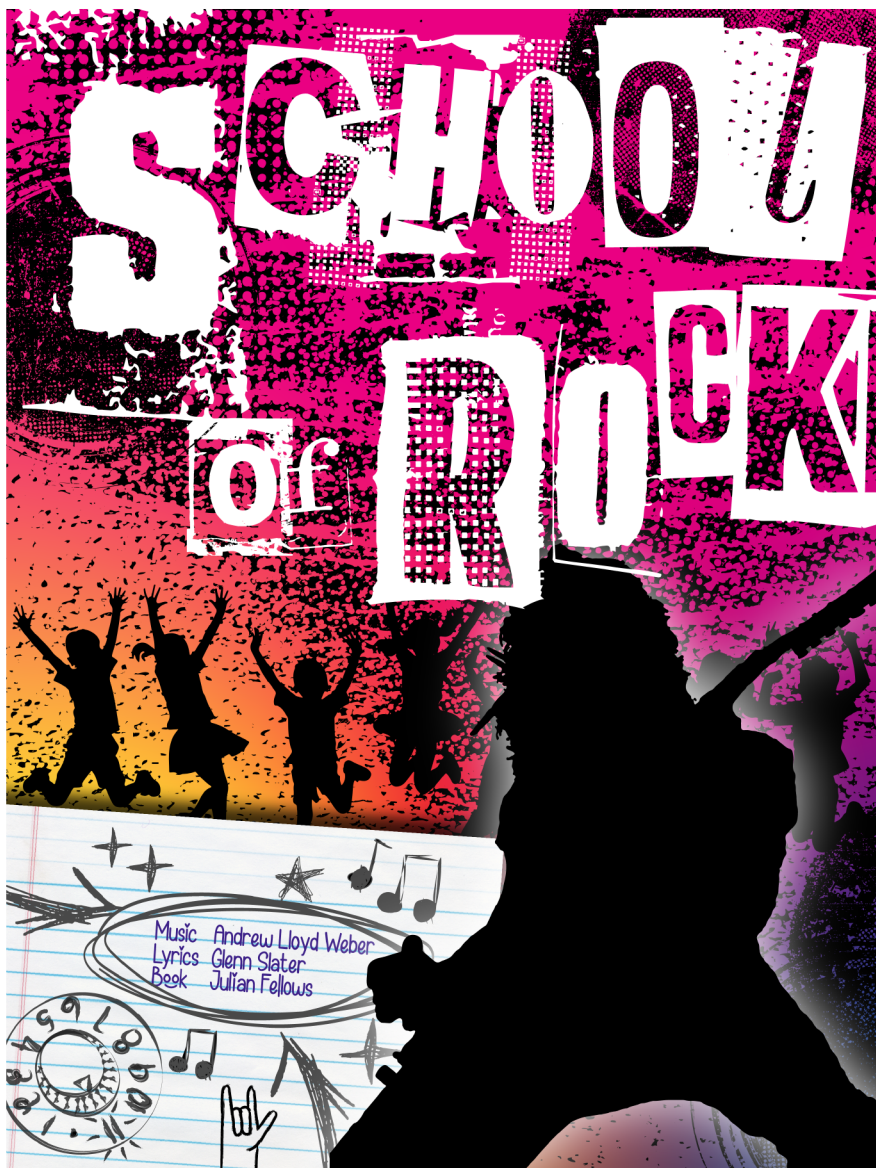
208-234-2679

556 W. Center St.

Pocatello, Id. 83204



AUDITION NOTICE



Farm Bureau Summer Theatre 2025
March 31 and April 1

Audition Requirements isu.edu/theatre or scan the code



**Idaho State
University**



**Farm Bureau
INSURANCE**
FARM BUREAU INSURANCE COMPANY OF IDAHO

ABOUT THE CAST



Matilde

Mireya Soto from Jerome, Idaho, is in the third year of her undergraduate studies in theatre and English literature. She has been recently seen as Louison in *The Imaginary*

Invalid, ensemble in *The Twits*, Nina in *The Seagull*, and Portia in *The Merchant of Venice*. She would like to thank the amazingly talented cast and crew for making this show such a meaningful experience, as well as her incredible family and friends for their never-ending support. She hopes you enjoy the show.



Lane

Xendria Childs Hutchings from Salt Lake City, Utah, is in her second year of her undergraduate degree, pursuing a bachelor's in theatre. Recently, she was the Assistant Director for

ISU's *Imaginary Invalid*. She played Niko in *The Wizard of Oz*, Bird/Ensemble in *The Twits*, and Sonia in *Life X 3*. Previously, she worked with the Utah Opera for two years. Xendria is always over the moon to be working in the theatre. She is especially grateful to everyone who put work into this show. She says many thanks to her family, dog, friends, and to her morning coffee. Thank you for supporting her art.

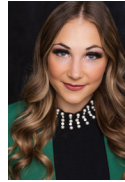


Virginia

Taylor Griffiths from Logan, UT, is a theatre major in her third year. Recent ISU roles she has been seen in include M'Lynn in *Steel Magnolias*, Guy in *The Imaginary*

Invalid, and Yvonne/Naomi in *Sunday in the Park With George*. She is so grateful to the cast and crew who have made this production an amazing experience

and a beautiful show to be a part of. She also wants to thank her family for always supporting her and her art. She hopes everyone enjoys the show!



Ana/Woman

Kathleen Bills from Logan, Utah, is excited to be part of such a wonderful show! She has performed with professional and community theatre companies for over 14

years. Kathleen is in her senior year of undergrad, pursuing a Bachelor of Arts in Theatre. Recently, she has been seen on the ISU stage as Dorothy in *The Wizard of Oz*, Frieda in *Sunday in the Park With George*, and Constance in *The Three Musketeers*. When she is not performing, Kathleen enjoys sunshine, chocolate, and all things Disney! She would like to thank her husband and family for always supporting her dreams.



Charles/Man

Hunter Angus from Aberdeen, Idaho, is in his second year of undergrad pursuing a Bachelor of Arts in History with a minor in theatre. He's delighted to join such a wonderful cast

in *The Clean House*. This is his second production at ISU, previously being seen as Thomas in *The Imaginary Invalid*. He'd like to thank everyone in the theatre department for their continued kindness and support.



Idaho State
University

Learn to repair ***CREATIVELY***



College of Technology | isu.edu/tech | (208) 282-2800

ABOUT THE CREATIVE TEAM



Sarah Senner *Stage Manager* from Nampa, Idaho, is in her third year of undergrad, pursuing her bachelor's in theatre with a minor in dance. She has stage-managed the APO student production of *What the Word Father Means* and has been seen performing in ISU's *Cendrillon*, *3 Musketeers*, and *Sunday in the Park with George*. She is very grateful to be a part of this production and would like to give a big thank you to the director, production crew, and cast, as well as her wonderful family and friends for their continual support in all she does.



Paul Yeates *Scenic Designer* is a lighting and scenic designer and professor at Idaho State University. Paul has an MFA in Lighting Design from the University of Connecticut, as well as a BFA in Technical Theatre and Design from Utah State University. He is a member of USITT and was invited to participate in the Hemsley Portfolio Review, the most prestigious review held for lighting designers at the Lincoln Center in New York City. Paul has worked around the country in various lighting and scenic design positions as both a designer and assistant designer.



Tristan Watson *Lighting Designer* from Ammon, Idaho, has helped on various shows at ISU in the past. He was Assistant Stage Manager for *The Cherry Orchard*, *The Book of Will*, and *Sunday in the Park with George*. Tristan was also the Assistant Lighting Designer for the summer production of *The Wizard of Oz*. In the past, he was a carpenter on many ISU productions and is currently working on the electrics crew. *The Clean House* will be his first show as a lighting designer, and he couldn't be more excited to work on such an amazing show.



Brandon Moeness *Assistant Lighting Designer* from Kansas City, Missouri is a student veteran in his senior year of undergrad pursuing his Bachelor of Arts in Theatre. This is his first experience with stage lighting and he is excited to gain more experience. He wants to thank all of his family and friends for their love and support.



Leoni Gambee *Costume Designer* from Caldwell, Idaho, will graduate in the spring of 2026. Before ISU, she was a 2022 apprentice at the Idaho Shakespeare Festival and a stagehand at BSU's Morrison Center. Her previous roles at ISU have included mainly performance, but she enjoys costume work as well. This is her second lead design role at the university, the first being APO's *Steel Magnolias*. She's radically excited about *The Clean House*, as the show speaks to her in many special ways, both personally and as an artist. This has been a freeing, educational, and emotional process. All the support she's gotten has directly contributed to her work. She'd like to thank her father for his continuous support, as without him, her reality would simply be dreams.



Idaho State
University

FRANK CHURCH *SYMPOSIUM* 2025



Idaho State University warmly invites community members, leaders, students, and researchers to the 2025 Frank Church Symposium! This year's theme, "Women Today: Politics, Perceptions, and Power," will explore critical issues like media framing, bodily autonomy, healthcare, and global policies impacting women in power.

A hallmark event at ISU's Pocatello campus each spring, the Frank Church Symposium—student-led and student-funded—has brought global perspectives to Idaho since 1970. Named for Senator Frank Church, renowned for his impact on U.S. foreign relations, the symposium celebrates diplomacy, insight, and leadership.

We look forward to seeing you there!



April 3-4, 2025
Rendezvous ABC Suites



ABOUT THE CREATIVE TEAM



Kallis Shibahara *Sound Designer* from Idaho Falls, Idaho, is in their second year at ISU pursuing a bachelor's in theatre with an emphasis in lighting design and technology. They've worked on many productions during their time at ISU, including soundboard operator for *The Twits* and *The Wizard of Oz*, lightboard operator for *The Three Musketeers* and *The Imaginary Invalid*, assistant stage manager for *Sunday in the Park with George* and *The Little Prince*, and lighting designer for APO's *Steel Magnolias*.



Chad Rodgers *Technical Director/Production Manager* comes back to his native state in his second year as faculty member, technical director, and production manager at Idaho State University, where he received his undergraduate degree in secondary education with an emphasis in theatre and communications. He joins the faculty of the ISU Department of Theatre after spending seven years at Oregon State University. Before that, Chad taught at Oklahoma State University and the University of North Carolina at Chapel Hill, where he received his

MFA. Before attending graduate school, he taught at Century High School in Pocatello, Idaho. Chad has worked with theatre companies around the country, including Oklahoma, Florida, Missouri, North Carolina, Virginia, Texas, and Oregon. Chad's areas of interest are carpentry, rigging, metal fabrication, and sound design.



Elena Winward *Properties Designer* from Chubbuck, Idaho, is in her second year at Idaho State University pursuing an Bachelor of Arts in Theatre. You may have seen her work in props this year in *Imaginary Invalid* or *The Little Prince*. Not only does Elena design props, but she also designs makeup, as you may have seen in *The Little Prince*. She wants to give a special thanks to her fiancé, her mom, and her teachers for getting her this far. Elena is beyond excited to see what the future has in store for her!



Madysen Stewart *Assistant Director* is in her final year at ISU studying as a theatre major and is excited to have worked on her final directing project here at ISU with all these amazing people. This show has brought unique challenges to the table but has been such a fun experience to learn and grow from, and she is grateful that she had such a great group of people to work with for this show. Thank you, Jef, Erika, and Jazz!



Jazz Grant *Assistant Director* from Salmon, Idaho, is a theatre major in their senior year here at ISU. They are so excited to share this story of learning to care and be cared for. They would like to thank everyone involved in this process for making it a joyful experience. Thank you so much for supporting the arts, enjoy the show!

ABOUT THE CREATIVE TEAM



Erika Semenova *Assistant Director* from Boise, Idaho, is in her third year of her undergraduate pursuing a Bachelor of Arts in Theatre. She is thrilled to work on *The Clean House* as Assistant Director with an amazing crew, cast, and director. You may have seen her works in other shows like *I LOVE YOU I LOVE YOU*, *The Imaginary Invalid*, and others. She'd like to thank her faculty and director for giving her such a great opportunity to learn and grow in so many ways.



Mallory Howard *Assistant Stage Manager* from Boise, Idaho, is in her fourth year of undergraduate studies pursuing her Bachelor of Arts in Sociology. She was honored to be an ASM for an ISU show once again. Working on an extraordinary show like *The Clean House* was a fantastic opportunity. The cast and crew worked hard to put the show together.



Asher Wardell *Assistant Stage Manager* from Shelley, Idaho, has been a part of the theatre world since middle school. They fell in love with tech soon after and have worked in tech roles ever since. They enjoy creating a world that fits within the actors' world and helping to create magic for the audience.



**Idaho State
University**

**You have
so much to
~~learn~~ teach.**

Idaho needs teachers.



Complete your degree and educator preparation 100% online!
Explore the Idaho State University College of Education's
teaching programs.

**SCAN &
LEARN MORE >>**



isu.edu/education



The Kennedy Center

The Kennedy Center American College Theater Festival, part of the Rubenstein Arts Access Program, is generously funded by David M. Rubenstein.

Special thanks to The Harold and Mimi Steinberg Charitable Trust for supporting the John F. Kennedy Center for the Performing Arts' Kennedy Center American College Theater Festival.

Additional support is provided by The Honorable Stuart Bernstein and Wilma E. Bernstein; and the Dr. Gerald and Paula McNichols Foundation.

Kennedy Center education and related artistic programming is made possible through the generosity of the National Committee for the Performing Arts.

This production is entered in the Kennedy Center American College Theater Festival (KCACTF). The aims of this national theater education program are to identify and promote quality in college-level theater production. To this end, each production entered is eligible for a response by a regional KCACTF representative, and selected students and faculty are invited to participate in KCACTF programs involving scholarships, internships, grants and awards for actors, directors, dramaturgs, playwrights, designers, stage managers and critics at both the regional and national levels.

Productions entered on the Participating level are eligible for invitation to the KCACTF regional festival and may also be considered for national awards recognizing outstanding achievement in production, design, direction and performance.

Last year more than 1,500 productions were entered in the KCACTF involving more than 200,000 students nationwide. By entering this production, our theater department is sharing in the KCACTF goals to recognize, reward, and celebrate the exemplary work produced in college and university theaters across the nation.

IDAHO STATE-CIVIC SYMPHONY

2024-2025 CONCERT SEASON

«ECHOES OF» TIME & PLACE

NELL FLANDERS – CONDUCTOR / ARTISTIC DIRECTOR



Heroic Aspirations

FREE ADMISSION
TO ALL ISU STUDENTS
AND \$6/TICKET FOR
AGES K-12

7:30 PM • FRIDAY
FEBRUARY 21, 2025

STEPHENS PERFORMING ARTS CENTER

FREE ADMISSION
TO MEMBERS OF
THE SHOSHONE-
BANNOCK TRIBES

ISU CONCERTO
COMPETITION WINNER
CORTNIE HULSE
FLUTIST

Concertino for Flute and
Orchestra, Op. 8
OTAR GORDELI

Symphony #3,
E major, Op. 55
“Eroica”
LUDWIG VAN BEETHOVEN

Finlandia
JEAN SIBELIUS



Cortnie Hulse
FLUTIST/ISU CONCERTO
COMPETITION WINNER



Nell Flanders
ISCS CONDUCTOR/
ARTISTIC DIRECTOR

PLATINUM SEASON SPONSORS

 **Portneuf**
MEDICAL CENTER

 **Idaho Central**
CREDIT UNION

SILVER CONCERT SPONSOR

LYNN OTTO, M.D.
&
LOUIS SPENCER-SMITH

BRONZE CONCERT CO-SPONSOR

*Pete and Ronda
Black*

This programming is supported in-part by:

NATIONAL
ENDOWMENT for the **ARTS**
arts.gov

arts
IDAHO



WWW.ISCSYMPHONY.ORG

The Idaho State-Civic Symphony is compliant with The Americans with Disabilities Act. If you are in need of a disability accommodation please call Disability Services on the ISU campus as (208) 282-3599, email Karina Mason-Rorris at karinarorris@isu.edu, or visit the website at www.isu.edu/disabilityservices.



STARS SCHOLARSHIP PROGRAM

The Stars Scholarship Program was created to help Theatre and Dance students fund their education.

100% of contributions to the Stars program are given as scholarships the following year. We thank all of you who have donated and those who are considering donating in the future.



A HEARTFELT THANKS TO OUR STAR SUPPORTERS!



Lead Actor

Mr. and Mrs. Scott and Janet Turner
Col. and Maj. F. Paul and Gina Briggs, ASAF
Drs. Ron and Linda Hatzenbuehler
Dr. and Mrs. Norm and Barb Schroder



Supporting Actor

Mr. Stephen Weeg and Ms. Nancy Greco
Mrs. Valorie Watkins



Cameo

Mrs. Sherry Zoeller
Dr. and Mrs. John and Lana Gribas

Director's Circle: \$1,500+ | Lead Actor: \$500-1,499
Supporting Actor: \$250-499 | Cameo: \$100-249

For more information on becoming a sponsor or Stars Scholarship contributor, call or email Meg Holmes: (208) 282-6452 | megstover@isu.edu.

All contributions to Theatre/Dance are put toward the continued development of our programs and help us continue to provide quality productions in southeastern Idaho.



Idaho State
University

Kasiska Division of Health Sciences



isu.edu/healthsciences

Offering over 35 degree program options in high demand health professions fields in Meridian, Pocatello and online. Plus, 7 Pocatello campus and 8 Meridian campus health care clinics open to the public.



SCHOOL OF PERFORMING ARTS

24-25 SEASON



March 20
Jensen Hall

April 11-12, 17-19
Bistline

