

The Imaginary Invalid



Written by Molière

Adapted by Oded Gross and Tracy Young

Original Lyrics by Oded Gross, Paul James Prendergast and Tracy Young

Original Music by Paul James Prendergast



**Idaho State
University**

Sponsored by



Presented by



Idaho State
University
College of
Business



Festival of Trees

The Little Prince Performance Package

Enjoy complimentary entry to the Festival
of Trees with ticket purchase to any
performance of *The Little Prince*
November 21 - 23.



**Scan the QR code for ticket
information on this and other
Festival of Trees events!**



About the Performance

The Little Prince is a family
show about love, friendship,
and the human experience
based on the book by Antoine
De Saint-Exupéry.



Idaho State University

Presents

The Imaginary Invalid

Written by
Molière

Adapted by
Oded Gross and Tracy Young

Original Lyrics by
Oded Gross, Paul James Prendergast and Tracy Young

Original Music by
Paul James Prendergast

CREATIVE TEAM

Director	Jef Petersen
Music Director	Geoffrey Friedley
Stage Manager	Kathleen Bills*
Scenic/Lighting Designer	Paul Yeates
Costume Designer	Tara Young
Technical Director/Production Manager	Chad Rodgers
Properties Designer	Elena Winward*
ASL Directors	Nicki Stanton
	Jill Radford
Choreographer	Cedar Lemrick
Fight Choreographer	Preston Edwards
Intimacy Coordinator	Vanessa Ballam
Assistant Directors	Erika Semenova*
	Xendria Childs Hutchings*
Assistant Stage Manager	Mallory Howard*
	Leoni Gambee*

APO Member* or APO Pledge**

October 4-5, 10-12 | 7:30 PM
Black Box Theatre | Stephens Performing Arts Center

ABOUT THE DIRECTOR

Jef Petersen

Director

Jef Petersen is a director, playwright, actor, and celebrating the start of his second year as faculty at Idaho State University. He has been directing for the past thirteen years in which time he's received multiple honors from the Kennedy



Center American College Theatre Festival (KCACTF). Some of his favorite shows he's directed are *The Three Musketeers* and *The Wizard of Oz* (both at ISU), and *I Love You, You're Perfect, Now Change* and *The Tragical History of Dr. Faustus* (both at Lewis-Clark State College). He is a graduate of the College of Idaho (BA), the University of Oregon (MA), and the University of Idaho (MFA). His recent play, *Emme and the Taking of the Woods*, received the National KCACTF David Mark Cohen Award in 2022. Jef is thrilled to be part of the incredible Department of Theatre in the School of Performing Arts at ISU. He would like to thank his amazing family for their support in this ongoing adventure in the amazing Pocatello, Idaho. Jef is originally from Greenleaf, Idaho.



Idaho State University

PASSION AND PRECISION

READ. WRITE. EXPLORE WHAT MATTERS.

English

Creative Writing
Literature
Professional Writing
Film Studies
Linguistics

Philosophy

Ethics
Biomedical Ethics
Philosophy
Philosophy—Pre-Law
Philosophy and Religion

Department of English and Philosophy

isu.edu/english | english@isu.edu | isu.edu/philosophy | philosophy@isu.edu | (208) 282-2478

DIRECTOR'S NOTE

It is often said that laughter is the best medicine, unless of course medicine is the best medicine. What a wonderful joy to get to work this fall on Molière's *The Imaginary Invalid*, adapted by Oded Gross and Tracy Young. I have a long history with this play, which started when I was a Sophomore in high school in Caldwell, ID. The version we used then was translated in the late 1800s by Charles Heron Wall, and at the age of 15, I didn't really grasp what the play was about, or even how it was funny. It took a lot of shepherding by my hilarious drama teacher to help me and my peers understand the play and the humor. It may have been that as a youngster, I always thought that theatre of the past was very proper and modest, but really, that adaptation had a lot of bawdy jokes hiding behind the proper language of a 19th-century academic. But that was the play that introduced little old me to the idea that plays can be a little naughty and that there is a long history of plays that make great humor out of bodily functions. Thankfully, the translation/adaptation we are using for the ISU production is absolutely accessible to our modern audience.

I have wanted to do this play for a long time. It is hilarious and very bawdy in its handling of medicine, and its treatments, which might at first glance seem like this is a play of buffoons making jokes about gas, bloating, and incontinence. However, like Italian commedia dell'arte, the form from which this play is descended, this play is an exploration of what it means to be human, what it means to fail, what it means to grieve, to love, to be so frightened of living that you stop living all together; to want something so bad that you would do anything to get it; and, to live life to its fullest to the very end. These themes are the exact stuff that every play ever written has explored; Molière's *The Imaginary Invalid* just does the exploring while making jokes that would get most of us stood in the corner as children. I would go so far as to say that this adaptation's poignant ending resolves the relationships and symbolism more satisfyingly than the original. Additionally, an interesting historical note that won't mean much until after you've seen the play: Molière was playing the role of Argan (the hypochondriac) in this play when he collapsed in a fit of coughing and hemorrhaging. He demanded that he complete the performance, which he did, ending with another fit of coughing, after which he was taken home where he died. Oh, so dramatic!

This entire production process has been filled with joy and laughter throughout. I could not have asked for a better project to start my second year here at ISU. I want to give the sincerest of "thank yous", to the faculty, staff, music director, ASL interpreters, stage management, assistant directors, actors, costume designers, scenic and lighting designers, technical director, costume shop manager, choreographer, builders, crew, publicity, and all of the many other hands involved in the production of this play. And thank you to my family for their love and support throughout this production. Whatever we make is always better when we all work together. So, if joy and laughter are good medicine, then I suspect audience members will leave feeling like they have had a good dose. Live your dreams.



ON THE STAGE!

CAST OF CHARACTERS

ARGAN	James Baum*
TOINETTE	Rylie Price**
GUY	Taylor Griffiths*
ANGELIQUE	Cambry Henline**
LOUISON	Mireya Soto*
BELINE	Addi Steele*
CLEANTE	Cayden Logan*
MONSIEUR De BONNEFOI	Brandon Moeness*
MONSIEUR DIAFOIRUS	Madysen Stewart*
THOMAS DIAFOIRUS	Hunter Angus**
BERALDE	Damon Harding**
FLEURANT	Klaus Graham
DOCTOR PURGON	Zack A. Christensen**
ENSEMBLE	Lyric Katzenstein**, Sadie Adegbenro**, Madison Kerr*

APO Member* or APO Pledge**

PRODUCTION

RUN TIME & SETTING

Run Time
Setting
Warning

2 hours 20 minutes & 10 minute intermission
The house of Monsieur Argan, France
Fog, Haze, Strobe/Flashing Lights

**Puppy
Preschool
Now Open!**

208-237-7387



PRODUCTION TEAM

RESIDENT STAFF

Theatre & Dance Dept. Chair/School of Performing Arts Co-Director
Music Dept. Chair/School of Performing Arts Co-Director
Promotions Director/Business Manager, School of Performing Arts
Theatre & Dance Dept. Administrative Assistant
Business and Promotions Interns

Tara Young
Shandra Helman
Meg Holmes
Dottie Ashby
Victoria Thomas*
Hannah Jensen*
Kaylee McKay**
John Roark
Travis Williams

Graphic Designer
Photographers

ISU Student* or ISU Alumni**

FRONT OF HOUSE

Box Office Manager
Box Office Staff

Julie McKnight
Amber Stiffler
Isabelle Eppich*
Megan Evans*
Bobette Wilson
Holly Wilson*
Kerri Fisk
Kristi Fisk
Hannah Jensen*
Victoria Thomas*
Jazz Grant*
Ryan Bills
Sara Nehring
Lacey Gardner
Kris Rasche
Taylor Steffler
CJ Cluff
Kellie Weaver

House Manager
Ushers

ISU Student*



No hidden costs, just great healthcare


HealthWest[™]

Primary Care • Dental Care • Pharmacy • Behavioral Health

www.HealthWestInc.org

PRODUCTION TEAM

RUN CREW

Lightboard Operator	Kallis Shibihara*
Sound Designer	Riley Strozykowski
Soundboard Operator	Asher Wardell
Dressers	Rebecca Collier
	Hope Bradford
Deck Crew	Payton Carter**
	Leoni Gambiae*
	Mallory Howard*

APO Member* APO Pledge**

CREATIVE TEAM CONTINUED

Dance Captain	Cayden Logan*
Costume Shop Manager	Wendy Roberts
Costume Technicians	Taylor Griffiths*
	Asher Wardell
	Elena Winward*
	Mireya Soto*
	Leoni Gambiae*
Master Electrician	Jacobi Molina*
Assistant Master Electrician	Kallis Shibahara*
Electricians	Jacobi Molina*, Tristan Watson*, Julian Seabury
Charge Artist	Xendria Childs Hutchings*
Master Carpenter	James Baum*
Scenic Carpenters	Xendria Childs Hutchings* Erik Roth Asher Wardell Grace Horrocks THEA 1111 Lab Students Ron Torres
Promotional Filmmaker	

APO Member* APO Pledge**

For the best in embroidered
and screen printed apparel

OldTownEmbroidery.com

208-234-2679

556 W. Center St.

Pocatello, Id. 83204



ABOUT THE CAST



Argan

James Baum from Ucon, Idaho, is in his junior year in his pursuit of a Bachelor of Arts Degree in Theatre! Some roles you might recognize him from last year include Henry in

Life X 3, a bird/circus hand in *The Twits*, and a man with his bicycle in *Sunday in the Park with George*. He would like to thank all his friends and family who have supported his journey in his dream field. He would also like to thank you for coming out and seeing this production, it means a lot to him. Adieu!



Toinette

Rylie Price from Mattawa, Washington, is a sophomore here at ISU double majoring in theatre and education. Some notable characters she has played include Mary

in BYU-Idaho's production of the *York Cycle Plays*, Sally Perks from *Puffs*, and Charlotte from *Cinderella*. She loves the theatre and can't wait to continue doing it as a profession. She hopes you enjoy this crazy silly show and wants to thank the cast, crew, and everyone else in the department for making her feel welcome so quickly.



Guy

Taylor Griffiths from Logan, Utah, is in her third year as a theatre major at ISU. Some of her favorite past roles at ISU include Yvonne in *Sunday in the Park With George*, and

Henrietta in *Silent Sky*. She is so grateful to the cast and crew and everyone who has made this production possible. She hopes everyone enjoys the show!



Angelique

Cambry Henline from Saratoga Springs, Utah, is in her freshman year at Idaho State University. She is double majoring in theatre and health sciences with hopes to

go to dental school to become an oral surgeon. She has been in many shows in her life with her most recent being Molly Ralston in *The Mousetrap* at Westlake High School. She would like to thank her cat Hazel and her friends for always being there when she needed to run lines.



Louison

Mireya Soto from Jerome, Idaho, is in her third year of undergraduate studies, pursuing a Bachelor's Degree in Theatre and English Literature. She is absolutely pumped to

get the chance to work with such an incredibly talented and supportive cast and crew. She has been seen in ISU productions as Juliet in *Romeo and Juliet*, and ensemble in *The Twits*. She has also been in shows at CSI including Nina in *The Seagull*, and Portia in *The Merchant of Venice*. She has had a wonderful time working on this hilarious and touching show and hopes you have just as good a time watching it!



Beline, Sandrine

Addi Steele from Idaho Falls, Idaho, is in her second year of her undergraduate pursuing a Bachelor of Arts in Theatre and is delighted to be able to work with an amazing

director and crew, as well as alongside incredibly talented actors. Addi has been seen as a Muggle Wump Child in *The Twits*, A Parisian in *The Three Musketeers*, Isabel Perkins in *The Color of Stars*, and



Idaho State
University

Learn to heal ***AILMENTS***



College of Technology | isu.edu/tech | (208) 282-2800

ABOUT THE CAST

an Ensemble Member in *Big Fish*. She'd like to give her friends and family thanks for their support in her love for acting. Thank you for supporting the arts!



Cleante

Cayden Logan from Salmon, Idaho, has in past ISU productions, played The Tinman in *The Wizard of Oz*, The Boatman in *Sunday in the Park with George*, and was

the understudy for Henry in *Life X 3*. He can't wait to perform in more shows and musicals!



Monsieur De Bonnefoi

Brandon Moeness from Kansas City, Missouri, is a student veteran in his senior year of undergrad, pursuing a Bachelor of Arts in Theatre. This is his

second performance on stage at ISU, his first being the summer performance of *The Wizard of Oz*, where he portrayed the roles of Uncle Henry and the City Guard. He is thankful for everyone he has worked with in the last year to get to this point. He wants to thank his family and friends, especially his amazing mother, for their love and support.



Monsieur Diafoirus

Madsen Stewart from Nampa, Idaho, is excited to have worked on another fun show with director, Jef Peterson. This role was definitely a stretch, but was well worth the work! You

may have seen her as Athos in *The Three Musketeers*, from the same director; she has also been seen as Old Lady/Blair Daniels in *Sunday in the Park with George* and Mrs Mugglewump in *The Twits* this past year. Enjoy the show and don't forget to laugh! Follow her journey on Instagram: madyhatter2002



Thomas Diafoirus

Hunter Angus from Aberdeen, Idaho, is delighted to join such a wonderful cast in *The Imaginary Invalid*. This is the second production he's been able to

participate in, having previously played in his high school's production of *Newsies* as Joseph Pulitzer. He'd like to give a special thanks to his friends and family for their kindness and support.



Beralde

Damon Harding from Jerome, Idaho, is very excited to have a chance to perform in this show. He recently transferred from CSI and has been taking his time getting

back into school, so this show is a huge step for him. Damon believes that Beralde is an amazing character to start his career here at ISU and is so excited to see what is in store for him next!



Fleurant

Klaus Graham from Idaho Falls, Idaho, is a sophomore at ISU. Klaus is majoring in English and minoring in linguistics but has also discovered an interest in theatre. The

Imaginary Invalid is his first play at ISU, which he is grateful to be a part of. Klaus would like to thank everyone involved in this production for helping him navigate his way through this enriching experience.

ABOUT THE CAST



Doctor Purgon

Zack Christensen from Twin Falls, Idaho, is an aspiring performer and writer with a background in speech and debate. He has previously played Constatine Treplev

in Anton Chekov's *The Seagull*, Dr. Stockman in Henrik Ibsen's *An Enemy of the People*, and Prince Eric in the musical, *The Little Mermaid*. As a transfer student, he is ecstatic to be participating in such an exciting program, with so many talented people. He thanks you for supporting the arts.



Ensemble, Minion

Lyric Katzenstein from Pocatello, Idaho, is a first year undergraduate student, majoring in theatre with a minor in dance. Lyric was born and raised in Pocatello,

Idaho, and grew up performing in various school and community choirs. They are delighted to be working alongside a group of extremely talented and beautiful people in *The Imaginary Invalid*. This will be their first play performance, and they have hopes of pursuing many more in the future.



Ensemble

Sadie Adegbenro from Idaho Falls, is in her second year of her undergrad, pursuing a bachelor's degree in chemistry with a minor in theatre. She is new to ISU's

theatre program this semester. At her high school's theatre department, Sadie both acted and assisted in the technical parts of shows. She would like to give thanks to the incredible director, cast, crew and faculty for an amazing experience.



Ensemble, Minion

Madison Kerr from Star, Idaho, is in the second year of her undergraduate and is delighted to be able to work with such an amazing cast and crew on her first show at ISU. She

participated in her high school's theatre department and was seen in *Mamma Mia*, *Taming of the Shrew*, and *Hello Dolly!* She would like to thank her family and friends for supporting her love for theatre.



What are the next steps in your ISU education journey?



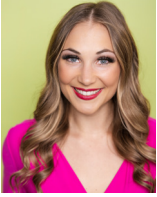
GO! for
GRAD SCHOOL

Learn More



isu.edu/graduate/

ABOUT THE CREATIVE TEAM



Kathleen Bills *Stage Manager* from Logan, Utah, is in her senior year of undergrad pursuing a Bachelor of Arts in Theatre. She has performed with professional and community theatre companies for over 13 years and enjoys working both onstage and off. Kathleen has recently stage managed for *The Twits*, and *Les Miserables* and Assistant Stage Managed *High School Musical* and *Spitfire Grill*. She would like to thank her husband and family for always supporting her dreams.



Geoffrey Friedley *Music Director* from Pocatello, Idaho, is an Adjunct Instructor at ISU and teaches Voice and Music History. He holds degrees from Lawrence University, the Eastman School of Music, Rutgers University, and the University of Utah. He has been privileged to collaborate on the following ISU productions: *Man of La Mancha*, *Honk, The King and I*, *Anything Goes*, *Oliver!*, *The Musical of Musicals*, *Fiddler on the Roof*, *Next to Normal*, *Hello, Dolly!*, *First Date*, *Bye Bye Birdie*, *The Best Christmas Pageant Ever*, *Bright Star*, *Urinetown*, *Amahl and the Night Visitors*, *Spitfire Grill*, *Cendrillon*, *High School Musical*, *Sunday in the Park with George*, and *The Wizard of Oz*. Thanks, *Imaginary Invalid* team, for your sweat and inspiration!



Paul Yeates *Scenic Lighting Designer* is a lighting and scenic designer and professor at Idaho State University. Paul has an MFA in Lighting Design from the University of Connecticut, as well as a BFA in Technical Theatre and Design Utah State University. He is a member of USITT and was invited to participate in the Hemsley Portfolio Review, the most prestigious review held for lighting designers at the Lincoln Center in New York City. Paul has worked around the country in various lighting and scenic design positions as both a designer and assistant designer.



Tara Young *Costume Designer* is originally from Illinois. Tara Young, Professor of Costume Design and Makeup and Department Chair at Idaho State University's Theatre Department has designed with professional theatres including Opera Idaho, The Goodman, Theatre by the Sea, First Folio Shakespeare Festival, McLeod Summer Playhouse, Missouri State's Tent Theatre, Western Missouri Playhouse, and Pennsylvania Centre Stage. Recent professional credits include *An American Dream*, *Barber of Seville*, *Carmen*, *Deadman Walking*, *The*

Merry Widow, *Evita*, *Fiddler on the Roof*, *Midsummer Night's Dream*, *The Tempest*, and *Richard the Third*. While at ISU she has designed costumes for upwards of 85 productions. She trains her students in design, pattern drafting & construction, millinery, armor, special effects makeup and fabric modification. When she is not at the Theatre she likes spending time with her husband Rusty and four amazing children.



Chad Rodgers *Technical Director/Production Manager* comes back to his native state in his second year as Faculty/Technical Director/Production Manager at Idaho State University, where he received his Undergraduate Degree in Secondary Education with an emphasis in Theatre and Communications. He joins the faculty of the ISU Department of Theatre after spending seven years at Oregon State University. Before that, Chad taught at Oklahoma State University, and the University of North Carolina at Chapel Hill where he received his

ABOUT THE CREATIVE TEAM

MFA. Before attending graduate school, he taught at Century High School in Pocatello, Idaho. Chad has worked with theatre companies around the country including Oklahoma, Florida, Missouri, North Carolina, Virginia, Texas, and Oregon. Chad's areas of interest are carpentry, rigging, metal fabrication, and sound design.



Elena Winward *Properties Designer* from Chubbuck, Idaho, is in her second year at ISU pursuing a BA in Theatre. She loves working tech positions as well as performing. You may have seen her onstage as Mrs. in *Sunday in the Park with George*. But you may have also seen her backstage work in *The Twits* as prosthetic artist, and *Life x Three* as props master. She is forever grateful to be doing the things that she loves and has many people to thank for their support, including her mom, her friends, and her high school directors. Thank you for supporting ISU and our art!



Erika Semenova *Assistant Director* from Boise, Idaho, works on *The Imaginary Invalid* as an assistant director. She is in her third year of undergrad pursuing her Bachelor of Arts in Theatre. Erika has worked on shows that have been produced in Idaho State, shows like *Marisol*, *The Three Musketeers*, *I love you I love you*, and others. She wants to give a big thanks to her family and also Jef Petersen for giving her such an amazing opportunity to work on production of this beautiful show.



Xendria Childs Hutchings *Assistant Director* from Salt Lake City, Utah, has been involved with the performing arts from a young age. She has just started her second year of college as a theatre major. Xendria was last seen in *The Twits* as Ensemble at ISU. She has also been Sonia in *Life X 3*. Hercule Poirot in *Murder On The Orient Express*, and is currently the Charge Artist at ISU.



Mallory Howard *Assistant Stage Manager* from Boise, Idaho, is in her fourth year of undergraduate studies pursuing her Bachelor of Arts in Sociology. She enjoyed getting to work with such a talented cast, fantastic crew, and brilliant director. She was honored with the chance to be a part of the creation of such an extraordinary show.



Leoni Gambee *Assistant Stage Manager* from Caldwell, Idaho, is a junior, and this is her third semester at ISU. She is pursuing a bachelor's in theater. Her previous productions at the university have mainly included acting, but she's excited to play a unique role in tech as a huge learning opportunity and a new experience. She previously worked as a dresser for *The Twits*, but as an assistant stage manager she's taken a hands-on role during the rehearsal process. Before ISU, she was a 2022 apprentice at Idaho Shakespeare Festival and a stagehand at BSU's

Morrison Center. Getting back into tech work is a great creative stretch, especially for such a playful, energetic, yet beautifully harmonic show! Watching the actors work their magic and getting to support them is such a wonderful thing.

ACKNOWLEDGMENTS

A huge thank you to...

Casey Quiroz

ISU Custodial Staff

ISU Disability Services Center

Physical Therapy and Athletic Training Program

Radiographic Science Program

Ron Torres

School of Nursing

We appreciate you!



**Idaho State
University**

**You have
so much to
~~learn~~ teach.**

Idaho needs teachers.



Complete your degree and educator preparation 100% online!
Explore the Idaho State University College of Education's
teaching programs.

**SCAN &
LEARN MORE >>**



isu.edu/education



The Kennedy Center

The Kennedy Center American College Theater Festival, part of the Rubenstein Arts Access Program, is generously funded by David M. Rubenstein.

Special thanks to The Harold and Mimi Steinberg Charitable Trust for supporting the John F. Kennedy Center for the Performing Arts' Kennedy Center American College Theater Festival.

Additional support is provided by The Honorable Stuart Bernstein and Wilma E. Bernstein; and the Dr. Gerald and Paula McNichols Foundation.

Kennedy Center education and related artistic programming is made possible through the generosity of the National Committee for the Performing Arts.

This production is entered in the Kennedy Center American College Theater Festival (KCACTF). The aims of this national theater education program are to identify and promote quality in college-level theater production. To this end, each production entered is eligible for a response by a regional KCACTF representative, and selected students and faculty are invited to participate in KCACTF programs involving scholarships, internships, grants and awards for actors, directors, dramaturgs, playwrights, designers, stage managers and critics at both the regional and national levels.

Productions entered on the Participating level are eligible for invitation to the KCACTF regional festival and may also be considered for national awards recognizing outstanding achievement in production, design, direction and performance.

Last year more than 1,500 productions were entered in the KCACTF involving more than 200,000 students nationwide. By entering this production, our theater department is sharing in the KCACTF goals to recognize, reward, and celebrate the exemplary work produced in college and university theaters across the nation.

IDAHO STATE-CIVIC SYMPHONY

2024-2025 CONCERT SEASON

«ECHOES OF» TIME & PLACE

NELL FLANDERS – CONDUCTOR / ARTISTIC DIRECTOR



Songs of the Land

FREE ADMISSION
TO ALL ISU STUDENTS
AND \$6/TICKET FOR
AGES K-12

7:30 PM • SATURDAY
NOVEMBER 2, 2024

STEPHENS PERFORMING ARTS CENTER

FREE ADMISSION
TO MEMBERS OF
THE SHOSHONE-
BANNOCK TRIBES

In celebration of Native American
Heritage Month

Farewell
HOVIA EDWARDS
AND JUSTIN RALLS

Concerto for Orchestra
BÉLA BARTÓK

Hovia Edwards
Native American
Flutist/Composer



PLATINUM SEASON SPONSORS



Idaho
Central
CREDIT UNION

BRONZE CONCERT CO-SPONSORS

Ron & Linda
Hatzenbuehler



Idaho State
University
College of
Education

B of
The Bank of
Commerce

This programming is supported in-part by:

NATIONAL
ENDOWMENT for the ARTS
arts.gov

arts
IDAHO
WESTAF



SCAN ME

WWW.ISCSYMPHONY.ORG

The Idaho State-Civic Symphony is compliant with The Americans with Disabilities Act. If you are in need of a disability accommodation please call Disability Services on the ISU campus as (208) 282-3599, email Karina Mason-Rorris at karinarorris@isu.edu, or visit the website at www.isu.edu/disabilityservices.

STARS SCHOLARSHIP PROGRAM

The Stars Scholarship Program was created to help Theatre and Dance students fund their education.

100% of contributions to the Stars program are given as scholarships the following year. We thank all of you who have donated and those who are considering donating in the future.



A HEARTFELT THANKS TO OUR STAR SUPPORTERS!



Directors Circle

Albert and Dorothy Burgemeister Endowed Fund—
Idaho Community Foundation
Ms. Doris Brydon



Lead Actor

Dr. and Mrs. Norm and Barb Schroder



Supporting Actor

Ms. Deb Pilgrim
Drs. Ronald and Linda Hatzenbuehler
Ms. Rayna Valentine and Mr. Harold D. Wilkes
Mr. and Mrs. Scott and Janet Turner

Cameo

Dr. and Mrs. John and Lana Gribas
Mr and Mrs. James and Sharon Manning
Mrs. Sherry Zoeller

Director's Circle: \$1,500+ | Lead Actor: \$500-1,499
Supporting Actor: \$250-499 | Cameo: \$100-249

For more information on becoming a sponsor or Stars Scholarship contributor, call or email Meg Holmes: (208) 282-6452 | megstover@isu.edu.

All contributions to Theatre/Dance are put toward the continued development of our programs and help us continue to provide quality productions in southeastern Idaho.



Idaho State
University

Kasiska Division of Health Sciences



isu.edu/healthsciences

Offering over 35 degree program options in high demand health professions fields in Meridian, Pocatello and online. Plus, 7 Pocatello campus and 8 Meridian campus health care clinics open to the public.



SCHOOL OF PERFORMING ARTS

24-25 SEASON

October
4-5, 10-12
Black Box



Mountain West
Marching Band
Invitational

October
19
ICCU Dome

October
19
Jensen Hall

Choral
Invitational
Festival



November
15-16, 21-23
Bistline

February
7-8, 13-15
Black Box



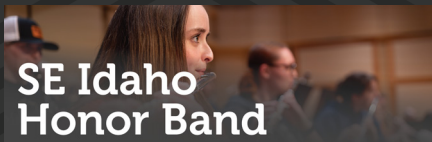
JazzFest



February
8
Jensen Hall

March
20
Jensen Hall

SE Idaho
Honor Band



THE LIGHTNING
THIEF
THE PERCY JACKSON MUSICAL



April
11-12, 17-19
Bistline