

The Little Prince



Idaho State
University

Sponsored by



Presented by



Idaho State
University
College of
Business



Festival of Trees

The Little Prince Performance Package

Enjoy complimentary entry to the Festival
of Trees with ticket purchase to any
performance of *The Little Prince*
November 21 - 23.



**Scan the QR code for ticket
information on this and other
Festival of Trees events!**



About the Performance

The Little Prince is a family
show about love, friendship,
and the human experience
based on the book by Antoine
De Saint-Exupery.



Idaho State University

Presents

The Little Prince

Written by

Rick Cummins and John Scoullar

Adapted from the book by

Antoine de Saint-Exupéry

CREATIVE TEAM

Director

Vanessa Ballam

Stage Manager

Hannah Jensen*

Scenic Designer

Paul Yeates

Costume Designer

Tara Young

Assistant Director

Kathleen Bills*

Sound Designer

Riley Strozykowski

Make-up Designer

Elena Winward*

Hair/Wigs

Asher Wardell

Technical Director/Production Manager

Chad Rodgers

Lighting Designer

Jacobi Molina

Properties Designer

Elena Winward*

Dialect Coach

Stefan Espinosa

Animations Designer

Ester Biggs

Assistant Stage Managers

Hope Lucille Bradford**

Kallis Shibahara*

APO Member* or APO Pledge**

November 15, 21-23, 2024 | 7:30 PM

November 16 | 2 PM

Bistline Theatre | Stephens Performing Arts Center

Produced by special arrangement with THE DRAMATIC
PUBLISHING COMPANY of Woodstock, Illinois

ABOUT THE DIRECTOR

Vanessa Ballam

Director

Vanessa Ballam is the Head of Acting in the Department of Theatre and Dance at Idaho State University. She also serves as the Associate Artistic Director and Education Director at Utah Festival Opera & Musical Theatre, Founding Director of the Utah High School Musical Theatre Awards (UHSMTA), Co-Chair for Region VII - Kennedy Center American College Theatre Festival (KCACTF), and a proud member of Actor's Equity Association.

Vanessa recently received the Acting Teacher of Excellence Award from the National Alliance of Acting Teachers. This award recognizes an outstanding acting teacher from their region who demonstrates excellence in teaching and a commitment to developing their craft as an acting teacher.

Vanessa has been performing professionally, directing, and teaching theatre around the country for over twenty years. Including such companies as Theatre Under the Stars, PCPA TheatreFest, The Utah Shakespeare Festival, Pennsylvania Shakespeare, Anchorage Opera, Oregon Cabaret Theatre, Music Theatre West, Utah Festival Opera and Musical Theatre, and the Lyric Repertory Company. Vanessa served as a Resident Actor at the Pacific Conservatory of the Performing Arts in Santa Maria for three years, where she oversaw the first-year acting program; she was also a visiting Assistant Professor of Theatre at Utah State University.

Vanessa founded the Utah Festival Conservatory of the Performing Arts and the Utah Festival Academy, an Adult Education Program. A former Miss Utah, Vanessa was awarded the Bert Parks talent scholarship at the Miss America Competition. M.F.A. Classical Acting Indiana University, B.A., and B.F.A. Utah State University.



DIRECTOR'S NOTE

Bringing *The Little Prince* to life has been a surprisingly demanding journey, not only as an artist and teacher but also as a mother. Antoine de Saint-Exupéry's story is often interpreted as a children's tale, yet it holds such profound truths for anyone who is willing to look a little deeper. This story reminds us of the beauty in viewing the world with wonder and the value of seeing beyond the surface of things—a lesson that feels especially relevant today.

As an artist, I'm constantly in awe of the power of storytelling to reveal what words alone cannot. This adaptation by Rick Cummins and John Scoullar gives us a unique way to engage with this beloved story while staying true to the spirit of the original. Each character, each planet, and each interaction is a chance to invite audiences to see the world in all its complexity and beauty through the eyes of a child.

As a teacher, I strive to foster a sense of curiosity and empathy in my students—qualities that *The Little Prince* embodies so beautifully. The themes of friendship, love, loss, and responsibility are eternal. Through this production, I hope our audience, young and old alike, will experience the wonder of rediscovering the world and cherishing those we have 'tamed.'

And as a mother, the themes resonate on an even deeper level. Seeing the world as my own children do, full of curiosity and openness, reminds me to live in the small, simple moments (that's what's really 'Important'). I believe that *The Little Prince* speaks to that inner child within us all, calling us back to innocence, kindness, and the things that truly matter.

As you join us on this journey, we'll explore what it means to live and love deeply and to hold onto that precious view of the world that only children—and those who still believe in magic—can see. Thank you for being here with us to share this timeless story. The world conspires to make us blind to its own workings; our real work is to see the world again. May we continue to listen to the sunsets together.

—Vanessa

ON THE STAGE!

CAST OF CHARACTERS IN ORDER OF APPEARANCE

THE AVIATOR	Eric Lundell*
THE LITTLE PRINCE	Jazz Grant*
ROSE	Payton Carter**
KING	Zack Christensen**
CONCEITED MAN	Gunner Dutt*
BUSINESSMAN	Chandler Fehr*
LAMPLIGHTER	Jackie Nguyen*
GEOGRAPHER	Trey Winder**
SNAKE	John Bean**
FOX	Leoni Gambee*
DESERT FLOWER	Kathleen Bills*

UNDERSTUDY

THE AVIATOR	Zack A. Christensen**
APO Member* or APO Pledge**	

PRODUCTION

RUN TIME & SETTING

Run Time	95 minutes with no intermission
Setting	The Sahara Desert Various Planets
Warning	Bubbles, Strobe Flashing Lights
Content Warning	Loss Grief

**Puppy
Preschool
Now Open!**

208-237-7387



PRODUCTION TEAM

RESIDENT STAFF

Theatre & Dance Dept. Chair/School of Performing Arts Co-Director	Tara Young
Music Dept. Chair/School of Performing Arts Co-Director	Shandra Helman
Promotions Director/Business Manager, School of Performing Arts	Meg Holmes
Theatre & Dance Dept. Administrative Assistant	Dottie Ashby
Business and Promotions Interns	Victoria Thomas*
	Hannah Jensen*
Graphic Designer	Kaylee McKay**
Photographers	John Roark
	Travis Williams

FRONT OF HOUSE

Box Office Manager	Julie McKnight
Box Office Staff	Amber Stiffler
	Isabelle Eppich*
	Megan Evans*
	Bobette Wilson
	Holly Wilson*
	Kerri Fisk
	Kristi Fisk
House Manager	Victoria Thomas
	Kathleen Bills (11/23)
Ushers	Madison Kerr
	Taylor Griffiths
	Mireya Soto
	Abigail Coombs
	Xendria Childs Hutchings
	Chiara Park
	Kris Rasche
	James Baum
	Erika Semenova
	Catherine Stover
	Schei Corbin
	Kellie Weaver
	Sydney Smith
	Cooper Corrington
	Fabian Rico

ISU Student* or ISU Alumni**

For the best in embroidered
and screen printed apparel

OldTownEmbroidery.com

208-234-2679

556 W. Center St.

Pocatello, Id. 83204



PRODUCTION TEAM

RUN CREW

Lightboard Operator	Julian Seabury*
Sound/Projection Operator	Rylie Price**
Dressers	Addi Steele*
	Cambry Henline**
	Mallory Howard*
	Mireya Soto* (11/19)
Deck Chief	Kallis Shibahara*
Run Crew	Hope Lucille Bradford**
	Madysen Stewart*

CREATIVE TEAM CONTINUED

Lift Captains	Chandler Fehr*
	Kallis Shibahara*
Costume Shop Manager	Wendy Roberts
Costume Technicians	Taylor Griffiths*
	Asher Wardell
	Elena Winward*
	Mireya Soto*
	Leoni Gambee*
	Kellie Weaver
	Tristan Watson*
Master Electrician	Julian Seabury*
Assistant Master Electrician	Jacobi Molina*, Tristan Watson*, Kallis
Electricians	Shibahara*, Julian Seabury*
Scenic Charge Artist	Xendria Childs Hutchings*
Scenic Carpenters	Xendria Childs Hutchings*
	James Baum*
	Asher Wardell
	Rylie Price**
	Grace Horrocks
	THEA 1111 Lab Students
Promotion Videographer	Ron Torres

APO Member* APO Pledge**



No hidden costs, just great healthcare


HealthWest[™]

Primary Care • Dental Care • Pharmacy • Behavioral Health

www.HealthWestInc.org

ABOUT THE CAST



The Aviator

Eric Lundell from Pleasant Grove, Utah, was most recently seen as Mr./Lee Randolph in *Sunday in The Park With George* and George Wallace in *What The Word Father Means*.

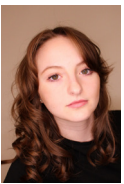
In the words of Antoine Saint-Exupéry, he hopes we all remember that "fairytales are the only truth in life."



The Little Prince

Jazz Grant from Salmon, Idaho, is in their 5th year here at ISU, working towards their Bachelor's Degree in Theatre. You may have seen them previously as the RolyPoly

Bird in *The Twits* or D'Artagnan in *The Three Musketeers* last season. They are delighted to be a part of this beautiful and heartfelt process with such beautiful and kindhearted people. Jazz would like to say thank you to their family, friends, and faculty who have helped them reach this point. It is good to have a friend. Thank you for joining our journey!



Rose

Payton Carter is delighted to be performing in her first show at Idaho State University. She is in the first year of her undergraduate studies, pursuing a Bachelor of

Arts in Theatre. She has previously played the Baker's Wife in *Into the Woods*, Sister Mary Robert in *Sister Act*, Catherine of Aragon in *SIX: Teen Edition*, Vivienne Kensington in *Legally Blonde The Musical*, Donkey in *Shrek The Musical*, as well as many others. Payton has been recognized as Best Actress at the 2023 Patty Duke Awards and made her Broadway debut at the 2023 Jimmy Awards, where she competed nationally and collaborated closely with industry professionals

and fellow nominees. She wants to give special thanks to her friends and family, who have supported her fiercely through all her endeavors, and to you for supporting the arts in your community!



King

Zack Christensen is a transfer student from CSI and is incredibly grateful for the open arms and relentless creativity of the ISU theatre department. Zack worked with children

and is an uncle to what experts consider to be the best kids in the world. He is proud to be involved in this production-working with a director, crew, and cast that recognizes the wonder and importance of children. He hopes that this story will connect with each child in a unique way and give them something of value to carry with them for the remainder of their lives.



Conceited Man

Gunner Dutt from Meridian, Idaho, is excited to show off the hard work he and his colleagues have put together. You may recognize him as Aramis from *The Three*

Musketeers and Mr. Mugglewump from *The Twits*! He is In his 4th year of undergrad pursuing a Bachelor of Fine Arts Degree. He wants to thank everyone who has supported him so far, as well as those who come to support the art that we're all so passionate about! Thank you!



Businessman

Chandler Fehr from Boise, Idaho, is in his final semester this fall and is excited to be bringing this underrepresented classic to life. Some of his most notable roles at ISU have

been Mr Beaver in *Narnia, the Musical*, Macbeth in *Macbeth*, William Jaggard in



Idaho State
University

Learn to maintain **AEROPLANES**



College of Technology | isu.edu/tech | (208) 282-2800

ABOUT THE CAST

Book of Will, and Mr. Twit in *The Twits*. Chandler would like to thank God, his family, Tanner, David, Danielle, and his wonderful director, Vanessa Ballam. Her relentless pursuit of creativity, magic, and truth on the stage will be cherished forever. If you would like to follow Chandler, his podcast, *Fehr The Burn*, can be found on most platforms!



Lamplighter

Jackie Nguyen from Twin Falls, Idaho, is in the last year of his undergraduate in pursuit of a Bachelor's Degree in Theatre and is beyond jazzed to work alongside such an

extraordinary team of artists. His previous works include *The Three Musketeers* as Porthos, *The Twits* as The Narrator, and *Addams Family* as Lucas Beineke. He also helped Assistant Direct for *Sunday in the Park with George*, which was an absolute delight! He'd like to thank everyone who's been a pillar in his creative endeavors! Enjoy the show, folks!



Geographer

Trey Winder from Rupert, Idaho, is pursuing a degree in theater at Idaho State University. Happy to be here and always looking forward to meeting new people and having

fun adventures. Acting Experience includes *Seussical the Musical* as a Wickersham Brother, *Freaky Friday* as the Father Figure, *Hello Dolly*, second in command waiter, and Towns Folk 2021. *The Forgotten Carols*, one of the homeless trio, 2023. *Grease The Musical*, Eugene, 2023. *Joseph And The Amazing Technicolor Coat*, captain of the guards, 2024. The Haunted Mansions of Albion, chainsaw clown Rip-Cord, 2022-2023.



Snake

John Bean from Pocatello, Idaho, is honored to have the opportunity to participate in such an incredible show. He is just starting his undergraduate studies

in secondary education. He would like to thank all those who furthered his theater education. "I would not be the person I am today without your help and guidance. Thank you."



Fox

Leoni Gambee from Caldwell, Idaho, is a senior, and this is her 3rd semester here. Before ISU, she was a 2022 apprentice at the Idaho Shakespeare Festival and a stagehand

at BSU's Morrison Center. Her previous roles at ISU have included an understudy for Inez in *Life X Three*, Treville in *The Three Musketeers*, and Louise in *Sunday in the Park with George*. However, this is her first leading role in a mainstage production, as well as her first-ever children's show! The Fox has taught her so much about laughter, patience, and what it means to keep a friend. *The Little Prince* in general, has been such a beautiful experience, and she is so honored to share this opportunity with everyone involved. This show, both story and fellow crew alike, means so much to her. None of it would be possible without her father, brother, and Aunt Julie. She'd also like to thank her Tia Josun.

ABOUT THE CAST



Hannah Jensen *Stage Manager* from Pocatello, Idaho, is delighted to make her stage management debut at ISU! She has previously been an assistant stage manager for past ISU productions of *The Wizard of Oz* and *The Three Musketeers*. She teaches Youth Improv at the Leavitt Center and has stage managed their summer theatre camps for the last four years. You may have also seen her on stage as Hannah, one of her dream roles, in *Puffs* at Old Town Actors Studio over the summer! She'd like to thank all her previous directors and coaches for cultivating her love of storytelling and her friends and family for their unwavering love and support.

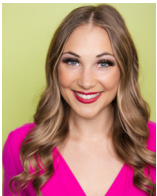


Paul Yeates *Scenic Designer* is a lighting and scenic designer and professor at Idaho State University. Paul has an MFA in Lighting Design from the University of Connecticut, as well as a BFA in Technical Theatre and Design Utah State University. He is a member of USITT and was invited to participate in the Hemsley Portfolio Review, the most prestigious review held for lighting designers at the Lincoln Center in New York City. Paul has worked around the country in various lighting and scenic design positions as both a designer and assistant designer.



Tara Young *Costume Designer* is originally from Illinois. Tara Young, Professor of Costume Design and Makeup and Department Chair at Idaho State University's Theatre Department has designed with professional theatres including Opera Idaho, The Goodman, Theatre by the Sea, First Folio Shakespeare Festival, McLeod Summer Playhouse, Missouri State's Tent Theatre, Western Missouri Playhouse, and Pennsylvania Centre Stage. Recent professional credits include *An American Dream*, *Barber of Seville*, *Carmen*, *Deadman Walking*, *The*

Merry Widow, *Evita*, *Fiddler on the Roof*, *Midsummer Night's Dream*, *The Tempest*, and *Richard the Third*. While at ISU she has designed costumes for upwards of 85 productions. She trains her students in design, pattern drafting & construction, millinery, armor, special effects makeup and fabric modification. When she is not at the Theatre she likes spending time with her husband Rusty and four amazing children.



Kathleen Bills *Assistant Director* from Logan, Utah, is excited to participate in such a wonderful show! She has worked with professional and community theatre companies for over 13 years, both onstage and off. Kathleen is a senior in her undergrad pursuing a Bachelor of Arts in Theatre. Recently, she has been seen on the ISU stage as Dorothy in *The Wizard of Oz*, Frieda in *Sunday in the Park with George* and Constance in *The Three Musketeers*. Kathleen has also recently directed *Alice in Wonderland* at the Leavitt Center. She would like to thank her

husband and family for always supporting her dreams.



Riley Strozykowski *Sound Designer* from Boise, Idaho, is delighted to join the crew of *The Little Prince* as the Sound Designer. You may remember her from her music in *The Imaginary Invalid* or as the mic operator for *Sunday in the Park with George*. She would like to say thank you so much to her family, friends and, most importantly, her beautiful puppy, Rockie.

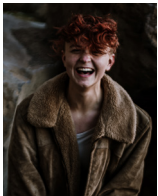
ABOUT THE CREATIVE TEAM



Jacobi Molina *Lighting Designer* from Rupert, Idaho, is a junior here at ISU majoring in theatre with a minor in mathematics. She is super stoked to be working on the show. This is her first-ever lighting design gig, and she's super nervous and excited to be able to start getting her work out there.



Elena Winward *Properties Designer | Make-up Designer/Artist* from Chubbuck, Idaho, is in her second year at ISU pursuing her BA in Theatre. She loves what she does and could not be happier to be where she is today. You may have seen Elena's props work in *The Imaginary Invalid* or *Life x Three*. You may have also seen some of her makeup artistry in *The Twits* or acting onstage as Mrs. in *Sunday in the Park with George*. She would like to thank all those who support her, especially her mom and high school directors.



Asher Wardell *Hair/Wig Designer* is a 19-year-old sophomore from Shelley, Idaho. They've had a passion for theatre since they were young, and they love bringing the magic of the stage to life through their work. Asher first discovered theatre in 7th grade when they took an acting class, and during their sophomore year of high school, they got to showcase their talent in a supporting role in *West Side Story*. After that experience, they found their passion shifted toward scene work and all the behind-the-scenes magic that makes a show special. Asher enjoys building sets and creating costumes, and theatre truly plays a vital role in their life.



Chad Rodgers *Technical Director/Production Manager* comes back to his native state in his second year as faculty/technical director/production manager at Idaho State University, where he received his Undergraduate Degree in Secondary Education with an emphasis in Theatre and Communications. He joins the faculty of the ISU Department of Theatre after spending seven years at Oregon State University. Before that, Chad taught at Oklahoma State University, and the University of North Carolina at Chapel Hill where he received his MFA. Before attending graduate school, he taught at Century High School in Pocatello, Idaho. Chad has worked with theatre companies around the country including Oklahoma, Florida, Missouri, North Carolina, Virginia, Texas, and Oregon. Chad's areas of interest are carpentry, rigging, metal fabrication, and sound design.

What are the next steps in your ISU education journey?



GO! for
GRAD SCHOOL

Learn More



isu.edu/graduate/



ABOUT THE CREATIVE TEAM



Stefan Espinosa *Dialect Coach* A native of Tucson, Arizona, Stefan has been working as a professional actor, director, fight choreographer, and dialect coach for the last 20 years. Some favorite past regional theatre companies include PCPA Theaterfest, Arizona Theatre Company, Oregon Cabaret Theatre, Lyric Repertory Theatre, Utah Festival Opera and Musical Theatre, Utah Shakespeare Festival and Salt Lake Acting Company. Stefan currently teaches acting, directing, and musical theatre at Utah State University. For a decade, Stefan taught Acting,

Voice, Movement, Combat, and Dialects at the Idaho State University. Some productions Stefan has directed include *The Lightning Thief*, *High School Musical*, *Narnia*, *Stop Kiss*, *Three Days of Rain*, *The Best Christmas Pageant Ever: The Musical*, and *Ordinary Days*. Stefan has a BFA in Musical Theatre from the University of Arizona and an MFA in Acting from the University of Houston PATP.



Ester Biggs *Animations Designer* is a passionate artist and devoted lover of theater and art, drawing inspiration from the vibrant narratives and emotions that live performance evokes. With a background in digital art and theatre, she believes in the transformative power of storytelling through various mediums. Ester has collaborated with various artistic companies, contributing to productions as a performer, artist, and even a nurse advisor. In addition to creating art through drawing, she strongly believes that the arts can unite and uplift communities. When

not actively drawing and adding to her Etsy shop, Ester works as an OBGYN nurse and loves spending time with her children and family. Ester is excited to share this journey with fellow theatre lovers and hopes to inspire others to appreciate the magic of live performance.



Kallis Shibahara *Assistant Stage Manager* from Idaho Falls, Idaho, is in their second year at ISU pursuing a B. A. in Theatre with an emphasis in Lighting Design and Stage Management. They've worked on many productions in their short time at ISU, including lightboard operator for *The Three Musketeers* and *The Imaginary Invalid*, soundboard operator for *The Twits* and *The Wizard of Oz*, and assistant stage manager for *Sunday in the Park with George*. They are also currently working on APO's production of *Steel Magnolias* as the lighting designer. They'd like

to thank their amazing friends and wonderful professors for their endless support.



Hope Lucille Bradford *Assistant Stage Manager* from Florida, is overjoyed to be joining the crew of *The Little Prince*. Hope is currently attending her freshman year of college at ISU. While this is her first semester involved in a mainstage production at ISU, you may recall her performances or work in various parts of Idaho. She participated in her high school's theatre department, being seen in *SIX the Musical*, *Legally Blonde*, and was recently a finalist for the Patty Duke Awards. Hope is excited to be working with an amazing director, crew, and actors. She

would like to thank her family and friends for encouraging her educational endeavors in the arts.

ACKNOWLEDGMENTS

A huge thank you to...
Utah State University Eastern
The Espinosa Family
Guthrie Theater
Ester Biggs
Ron Torres
We appreciate you!



**Idaho State
University**

**You have
so much to
~~learn~~ teach.**

Idaho needs teachers.



Complete your degree and educator preparation 100% online!
Explore the Idaho State University College of Education's
teaching programs.

**SCAN &
LEARN MORE >>**



isu.edu/education



Idaho State University

PASSION AND PRECISION

READ. WRITE. EXPLORE WHAT MATTERS.

English

**Creative Writing
Literature
Professional Writing
Film Studies
Linguistics**

Philosophy

**Ethics
Biomedical Ethics
Philosophy
Philosophy—Pre-Law
Philosophy and Religion**

Department of English and Philosophy

isu.edu/english | english@isu.edu | isu.edu/philosophy | philosophy@isu.edu | (208) 282-2478



The Kennedy Center

The Kennedy Center American College Theater Festival, part of the Rubenstein Arts Access Program, is generously funded by David M. Rubenstein.

Special thanks to The Harold and Mimi Steinberg Charitable Trust for supporting the John F. Kennedy Center for the Performing Arts' Kennedy Center American College Theater Festival.

Additional support is provided by The Honorable Stuart Bernstein and Wilma E. Bernstein; and the Dr. Gerald and Paula McNichols Foundation.

Kennedy Center education and related artistic programming is made possible through the generosity of the National Committee for the Performing Arts.

This production is entered in the Kennedy Center American College Theater Festival (KCACTF). The aims of this national theater education program are to identify and promote quality in college-level theater production. To this end, each production entered is eligible for a response by a regional KCACTF representative, and selected students and faculty are invited to participate in KCACTF programs involving scholarships, internships, grants and awards for actors, directors, dramaturgs, playwrights, designers, stage managers and critics at both the regional and national levels.

Productions entered on the Participating level are eligible for invitation to the KCACTF regional festival and may also be considered for national awards recognizing outstanding achievement in production, design, direction and performance.

Last year more than 1,500 productions were entered in the KCACTF involving more than 200,000 students nationwide. By entering this production, our theater department is sharing in the KCACTF goals to recognize, reward, and celebrate the exemplary work produced in college and university theaters across the nation.

IDAHO STATE-CIVIC SYMPHONY

2024-2025 CONCERT SEASON

《ECHOES OF》TIME & PLACE

NELL FLANDERS – CONDUCTOR / ARTISTIC DIRECTOR



Joy to the World

FRIDAY & SATURDAY
DECEMBER 6 & 7, 2024
7:30 PM

STEPHENS PERFORMING ARTS CENTER

FREE ADMISSION
TO ALL ISU STUDENTS
AND \$6/TICKET FOR
AGES K-12

FREE ADMISSION
TO MEMBERS OF
THE SHOSHONE-
BANNOCK TRIBES

Holiday Concert
with
ISU Concert Choir,
Camerata Singers,
and
ISU Children's Chorus

HOLIDAY DINNER

Saturday • December 7, 2024
5:00-7:00pm • Rotunda



DINNER
RESERVATIONS



Nell Flanders
ISCS CONDUCTOR/
ARTISTIC DIRECTOR



Jeffrey Francom
DIRECTOR OF CHORAL
ACTIVITIES, ISU

PLATINUM SEASON SPONSORS



This programming is supported
in-part by:



SILVER CONCERT SPONSOR



BRONZE CONCERT CO-SPONSORS



WWW.ISCSYMPHONY.ORG

The Idaho State-Civic Symphony is compliant with The Americans with Disabilities Act.
If you are in need of a disability accommodation, please call Disability Services
on the ISU campus at (208) 282-3599, email Karina Mason-Rorris at
karinarorris@isu.edu, or visit the website at www.isu.edu/disabilityservices.



CONCERT
TICKETS

STARS SCHOLARSHIP PROGRAM

The Stars Scholarship Program was created to help Theatre and Dance students fund their education.

100% of contributions to the Stars program are given as scholarships the following year. We thank all of you who have donated and those who are considering donating in the future.



A HEARTFELT THANKS TO OUR STAR SUPPORTERS!



Directors Circle

Albert and Dorothy Burgemeister Endowed Fund—
Idaho Community Foundation
Ms. Doris Brydon



Lead Actor

Dr. and Mrs. Norm and Barb Schroder



Supporting Actor

Ms. Deb Pilgrim
Drs. Ronald and Linda Hatzenbuehler
Ms. Rayna Valentine and Mr. Harold D. Wilkes
Mr. and Mrs. Scott and Janet Turner

Cameo

Dr. and Mrs. John and Lana Gribas
Mr and Mrs. James and Sharon Manning
Mrs. Sherry Zoeller

Director's Circle: \$1,500+ | Lead Actor: \$500-1,499
Supporting Actor: \$250-499 | Cameo: \$100-249

For more information on becoming a sponsor or Stars Scholarship contributor, call or email Meg Holmes: (208) 282-6452 | megstover@isu.edu.

All contributions to Theatre/Dance are put toward the continued development of our programs and help us continue to provide quality productions in southeastern Idaho.



Idaho State
University

Kasiska Division of Health Sciences



isu.edu/healthsciences

Offering over 35 degree program options in high demand health professions fields in Meridian, Pocatello and online. Plus, 7 Pocatello campus and 8 Meridian campus health care clinics open to the public.



SCHOOL OF PERFORMING ARTS

24-25 SEASON



February 7-8, 13-15
Black Box



February 8
Jensen Hall



March 20
Jensen Hall



April 11-12, 17-19
Bistline